

Rubber-Tech Hose & Assemblies



Hose

This hose feels and looks like rubber, without the associated negative aspects.

Temperature Range:
-20°C to +60°C

Cover: black with red stripe.

Lining: black, oil resistant.

Braid: high tensile polyester yarn.

Safety Factor: 3:1

- High abrasion resistance
- Resistant to most oil and fuel
- Resistant to permanent kinks
- Excellent ozone resistance, making it suitable for outdoor applications
- Smooth bore ensures highest possible flow



Hose, 30 Metre Coils

PART NUMBER	ID	ID mm	OD mm	bar
RH06X	1/4"	6.3	14	20
RH08X	5/16"	8	17	20
RH10X	3/8"	10	19	20
RH13X	1/2"	12.5	23	20
RH19X	3/4"	19	30	20
RH25X	1"	25	37	20

Hose, 100 Metre Coils

PART NUMBER	ID	ID mm	OD mm	bar
RH06X-100	1/4"	6.3	14	20
RH08X-100	5/16"	8	17	20
RH10X-100	3/8"	10	19	20
RH13X-100	1/2"	12.5	23	20
RH19X-100	3/4"	19	30	20
RH25X-100	1"	25	37	20

Assemblies

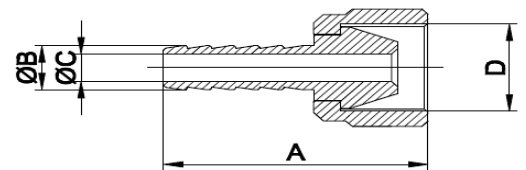
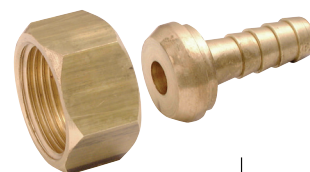
All Hose Assemblies are fitted with brass female nuts and 60° coned tails at each end. Each end fitting is mechanically swaged onto the hose, using a brass ferrule to ensure a positive leak-free connection.



Assemblies, Female Thread, BSPP

PART NUMBER	L mtrs	ID	bar
RH06-5	5	1/4"	18
RH06-10	10	1/4"	18
RH06-15	15	1/4"	18
RH06-20	20	1/4"	18
RH08-5	5	5/16"	18
RH08-10	10	5/16"	18
RH08-15	15	5/16"	18
RH08-20	20	5/16"	18
RH10-5	5	3/8"	18
RH10-10	10	3/8"	18
RH10-15	15	3/8"	18
RH10-20	20	3/8"	18
RH13-5	5	1/2"	18
RH13-10	10	1/2"	18
RH13-15	15	1/2"	18
RH13-20	20	1/2"	18

Swivel Nuts & Hose Tails



60° Coned Seat, BSPP

Part No:	A	B	C	D
FH13/14	36.5mm	7.9mm	7mm	G1/4"
FH13/516	37.5mm	8.5mm	5mm	G1/4"
FH17/38	50.5mm	11mm	7mm	G3/8"
FH21/12	53.2mm	14mm	10mm	G1/2"